
Product Build Report

Overview

The Product Build Report is used to give the company a better idea of the parts that are needed and the parts that are currently in inventory that can be used in the subassembly of parts. There are two different ways to build the Product Build Report: creating a list of parts, or getting the parts needed list from the sales orders.

Installation

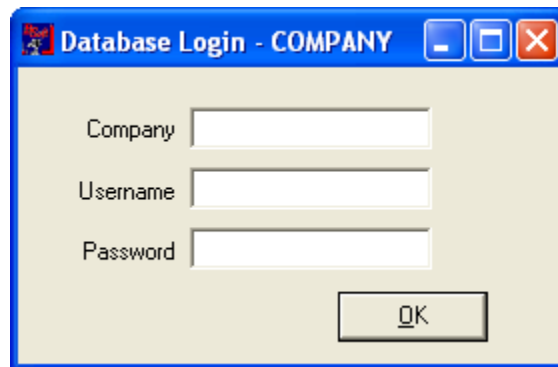
Please refer to the Bsoft Installation Instructions document for details on downloading and installing this application.

The tool can be uninstalled by going to control panel → Uninstall software

Setup

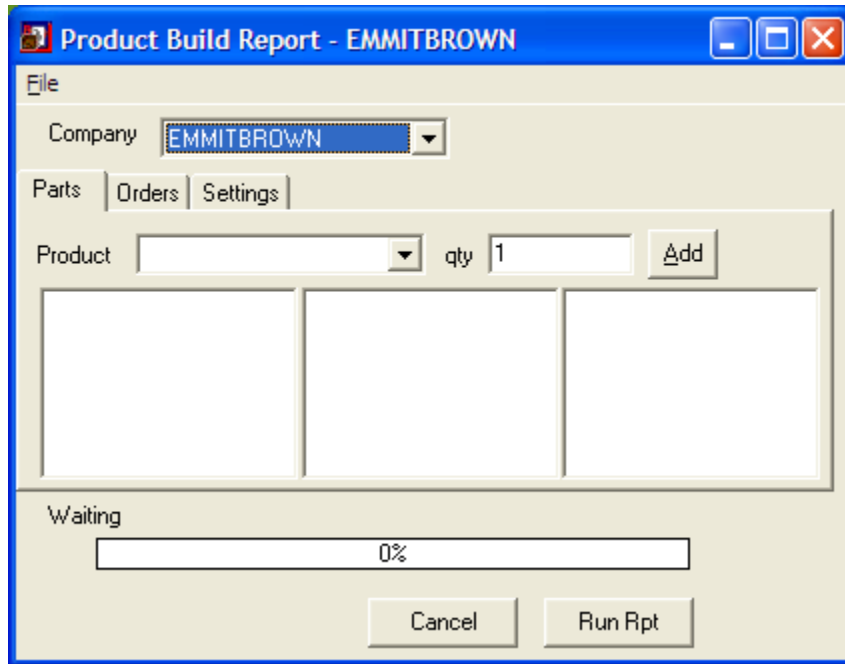
The installer will put a shortcut into your startup items folder, so the application will launch when you start up your computer. If you wish to launch it manually – the default install puts a shortcut into the Start→All Programs→Menu.

Once the application is installed and (if necessary) registered – you will be prompted to log into BW



You must login using the Manager username and password. This information is saved in encrypted form on your computer, so you will not need to re-enter it again on this computer.

Once the system is connected, you can open the application in your specified company and begin the process of building your report.



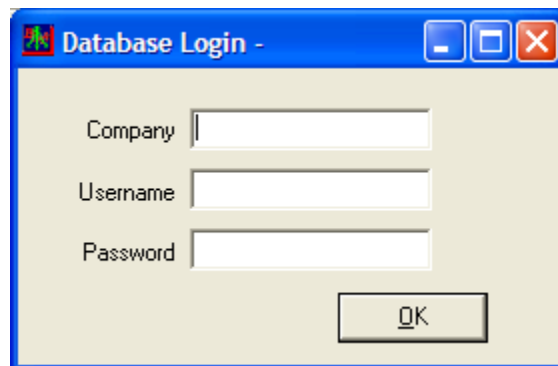
File Menu

The file menu shows three options: About, Select Company, and Quit.

- **About:** This screen will give you your product information and relevant data.



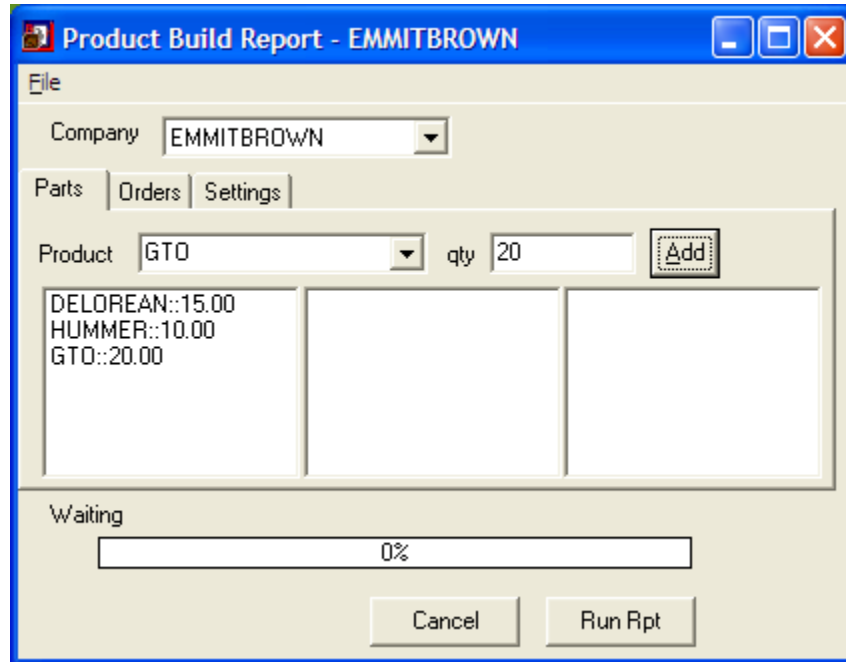
- **Select Company:** Allows you to decide what company you want to open. However if you are opening the Receipt Distribution System through your BusinessWorks system you will already be in your needed company.



- **Quit:** This will log you out of the company that you are currently working in.

Product Build Report

Create a List of Parts (Stock): On the Parts tab, this allows the user to enter the items that they want to build and the number of the particular product that you are interested in making. If you double-click on an item in the product list it will be dropped off. From this screen you will want to run the product build report.



Once you run the report a spreadsheet will appear to show you your build tree and another tab for your material requirements. This way of report building will sort your products by each product you wish to build. A nice feature of this program is that if you decide to change the number of a certain product that you want to make, when you change that number on the build tree tab the changes will roll over to the material requirements tab, adjusting your order.

Build Tree Tab:

On the build tree tab you will see a nested down report showing you the different items needed to make a product, what is needed to make that product and so forth. It will also show you the quantity required, your quantity on hand, the vendors of different parts, the cost of each part, and the build cost.

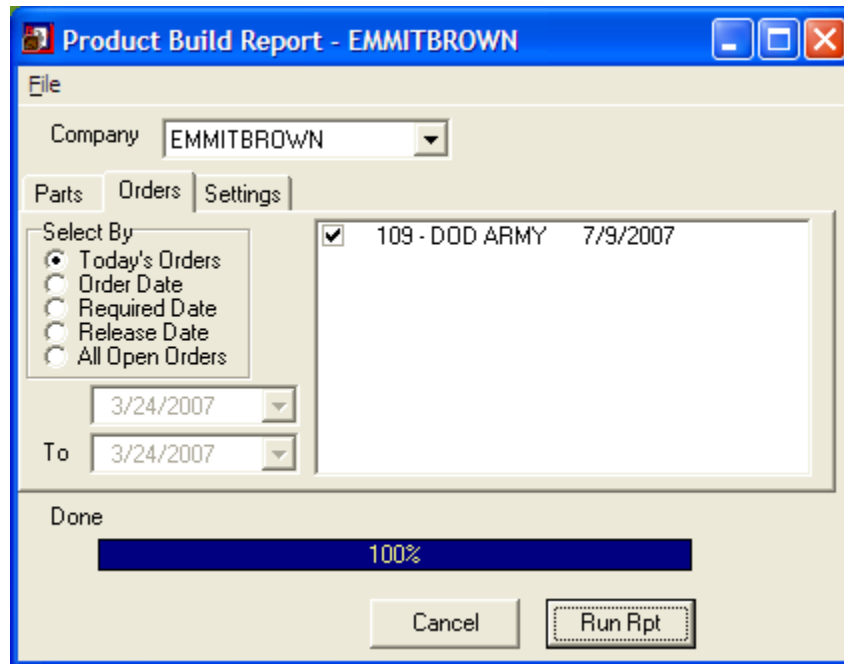
Part Description	Cat	Level 1	Level 2	Qty Req	Qty I/S	Qty On Ord	EOQ	Total Orde	Vendor	Unit Cost	Built Cost	Ext. Cost	PartIDHold
Delorean Automobile	M	DELOREAN		15	109500	0	20				\$399,121.69		0 DELOREAN
3/8th inch Sheet Steel	P		SHEET STL 3/8	1125	109500	0	0		BETHSTEEL	\$0.77			0 SHEET STL 3/8
Wires	P		WIRES	7500	20999	0	0		ROMEX	\$0.75			0 WIRES
Tempered Auto Glass	P		GLASS	375	2100	0	0		GLASS PRO	\$45.00			0 GLASS
Tubular Chassis Steel	P		TUBULAR STEEL 2"	2628.75	126970	0	0		BETHSTEEL	\$0.45			0 TUBULAR STEEL 2"
Blanks for milling engine	P		BLOCK STL	168.45	2727	0	0		BETHSTEEL	\$95.00			0 BLOCK STL
Time Controller Buttons	P		BUTTONS	225	58200	0	0		SPACEBT	\$0.31			0 BUTTONS
Misc Auto Parts	P		AUTOPARTS	30000	46020	0	30000		DELPHI	\$11.95			0 AUTOPARTS
Hummer	P	HUMMER		10	0	0	10	20	GM	\$38,000.00			0 HUMMER
Pontiac GTO	P	GTO		20	13	0	20	20	GM	\$26,000.00			0 GTO

Materials Required Tab:

On the materials required tab it will display a summary of all the parts that are necessary for the build. This section is characterized initially by vendor, then by part. You will be shown how many of each item are required, how many you have in stock, and how many need to be ordered.

Vendor	Part	Description	Total Rec'n	In Stock	On Order	Short	EOQ	Min on Hand	Suggested	Override	Last Price	Extended
DELPHI	AUTOPARTS	Misc Auto Parts	30000	46020	0	0	30000	0			\$ 11.95	
SPACEBT	BUTTONS	Time Controller Buttons	225	58200	0	0	0	0			\$ 0.31	
BETHSTEEL	BLOCK STL	Blanks for milling engine	168.45	2727	0	0	0	0			\$ 95.00	
BETHSTEEL	TUBULAR STEEL 2"	Tubular Chassis Steel	2628.75	126970	0	0	0	0			\$ 0.45	
GLASS PRO	GLASS	Tempered Auto Glass	375	2100	0	0	0	0			\$ 45.00	
ROMEX	WIRES	Wires	7500	20999	0	0	0	0			\$ 0.75	
BETHSTEEL	SHEET STL 3/8	3/8th inch Sheet Steel	1125	109500	0	0	0	0			\$ 0.77	
GM	GTO	Pontiac GTO	20	13	0	7	20	0	20		\$ 26,000.00	\$ 520,000.00
GM	HUMMER	Hummer	10	0	0	10	20	0	20		\$ 38,000.00	\$ 760,000.00
GM	HUMMER	Hummer	10	0	0	10	20	0	20		\$ 38,000.00	\$ 760,000.00
											Total Build Buy	\$ 2,040,000.00

Create a List from Sales Orders: The second way to create your product build report is to specify that sales orders that you will want to fill by clicking on the Orders tab. There is different sales order information that you have to choose from which include: Today's Date, Order Date, Required Date, Release Date or All Open Orders. This way of report building will sort your products by sales orders.



- **Today's Date:** Will show all orders that are scheduled to be released on the current day.
- **Order Date:** Automatically gives you the orders that were scheduled to be released in the last week.
- **Required Date:** Gives you the orders that are scheduled to be released in the following week.
- **Release Date:** Gives you the orders that are scheduled to be released in the current week.
- **All Open Orders:** Shows all open orders that the company needs to have filled at any time.

After you select the dates and sales orders that you want to have filled you will again run the report. This will then generate the same two reports that were generated by creating the list of parts that you required.

Part Description	Cat	Level 1	Level 2	Level 3	Level 4	Qty Req	Qty/IS	Qty On Ord	EQQ	Total Order	Vendor	Unit Cost	Built Cost	Est. Cost	PartOnHold
Hammer	M		HUMMER			6	28			20	GM	\$38,000.00	\$321,969.53	0	TMHUMME
Flux Capacitor	M		FLUX CAPACITOR			6	202						\$4,343.50	0	FLUX CAPA
Glass Tubing	P			GLASS TUBES		10.5	1022084				GLASS PRO	\$0.10	0	0	GLASS TUBI
Flux for flux capacitor	P			FLUX		90	1590				WESTERN FLUX	\$19.75	0	0	FLUX
Flux Chamber	M			FLUX CHAMBER		6	234						\$427.50	0	FLUX CHAM
Blanks for milling engine	P				BLOCK STL	4.5	2727				BETHSTEEL	\$95.00	0	0	BLOCK STL
Control panel for	M		TIME CONTROLLER			6	536						\$318.09	0	TIME CONTI
Time controller Button Panel	M			BUTTON PANEL		6	0						\$3.47	0	BUTTON PA
3/8th inch Sheet Steel	P			SHEET STL 3/8		4.5	109500				BETHSTEEL	\$0.77	0	0	SHEET STL:
Wires	P			VIPES		210	20999				ROMEX	\$0.75	0	0	VIPES
Time Controller Buttons	P			BUTTONS		120	58200				SPACBET	\$0.31	0	0	BUTTONS
LED Numerical Displays	P			LED DISPLAY		108	4000				RADIO SHACK	\$0.95	0	0	LED DISPLA
Nuclear Fuel	P		FUEL RODS			6	323				ADV ATOM	\$11000.00	0	0	FUEL RODS
The original DeLorean Time	M	TM DELOREAN				6	14						\$105126158	0	TM DELORE
DeLorean Automobile	M		DELOREAN			6	0		20				\$155,646.68	0	DELOREAN
3/8th inch Sheet Steel	P			SHEET STL 3/8		450	109500				BETHSTEEL	\$0.77	0	0	SHEET STL:
Wires	P			VIPES		3000	20999				ROMEX	\$0.75	0	0	VIPES
Tempered Auto Glass	P			GLASS		150	2100				GLASS PRO	\$45.00	0	0	GLASS
Tubular Chassis Steel	P			TUBULAR STEEL 2"		10515	126970				BETHSTEEL	\$0.45	0	0	TUBULAR S
Blanks for milling engine	P			BLOCK STL		67.38	2727				BETHSTEEL	\$95.00	0	0	BLOCK STL
Time Controller Buttons	P			BUTTONS		90	58200				SPACBET	\$0.31	0	0	BUTTONS
Misc Auto Parts	P			AUTOPARTS		12000	48020		30000		DELPHI	\$11.95	0	0	AUTOPART
Flux Capacitor	M		FLUX CAPACITOR			6	202						\$4,343.50	0	FLUX CAPA
Glass Tubing	P			GLASS TUBES		10.5	1022084				GLASS PRO	\$0.10	0	0	GLASS TUBI
Flux for flux capacitor	P			FLUX		90	1590				WESTERN FLUX	\$19.75	0	0	FLUX
Flux Chamber	M			FLUX CHAMBER		6	234						\$427.50	0	FLUX CHAM
Blanks for milling engine	P				BLOCK STL	4.5	2727				BETHSTEEL	\$95.00	0	0	BLOCK STL
Control panel for	M		TIME CONTROLLER			6	536						\$318.09	0	TIME CONTI
Time controller Button Panel	M			BUTTON PANEL		6	0						\$3.47	0	BUTTON PA
3/8th inch Sheet Steel	P			SHEET STL 3/8		4.5	109500				BETHSTEEL	\$0.77	0	0	SHEET STL:
Wires	P			VIPES		210	20999				ROMEX	\$0.75	0	0	VIPES

*As a point of interest, please disregard the two empty columns and the final column as they are used for lookup purposes in the formulas used between the worksheets.

Settings: The final tab is the setting tab which gives us a few options for modifying the reports that are generated. The options given are:

Product Build Report - EMMITBROWN

Company: EMMITBROWN

Parts | Orders | Settings

- Include None Required on Materials List
- Include Non-Inventory Items
- Treat negative on hands as zeroes
- Include "on order" qty
- Treat makes as buys when

ProductCategoryDesc1 is []

Done

100%

Cancel Run Rpt

- **Include None Required on Materials List:** If this box is checked it will show you all of the items needed to build your product. If this box is unchecked it will only show you the items that you are short on and may need to order. Unfortunately with this option being checked, if you were to change a quantity on the Build Tree tab and that created a new part that needed to be ordered it would not roll over and show up on the Materials Required tab.
- **Treat negative on hands as zeros:** This box allows for a more accurate count of what is needed for a particular order. If for instance, a company has a negative balance of 100 bolts in inventory and we place an order needing 20 more bolts, our materials required will only show that we need 20 bolts, not 120 bolts.
- **Include “on order” quantity:** This box will allow us to see if we have any amount of the part already ordered but not yet received.
- **Treat makes as buys when ProductCategoryDesc1 is _____:** This section allows your report to ignore the subassembly list and treat a part as a purchased item if you specify that it is purchased with a “P”.
- **Include on-Inventory Items:** This is used for items that you do not track the quantity for in the inventory.